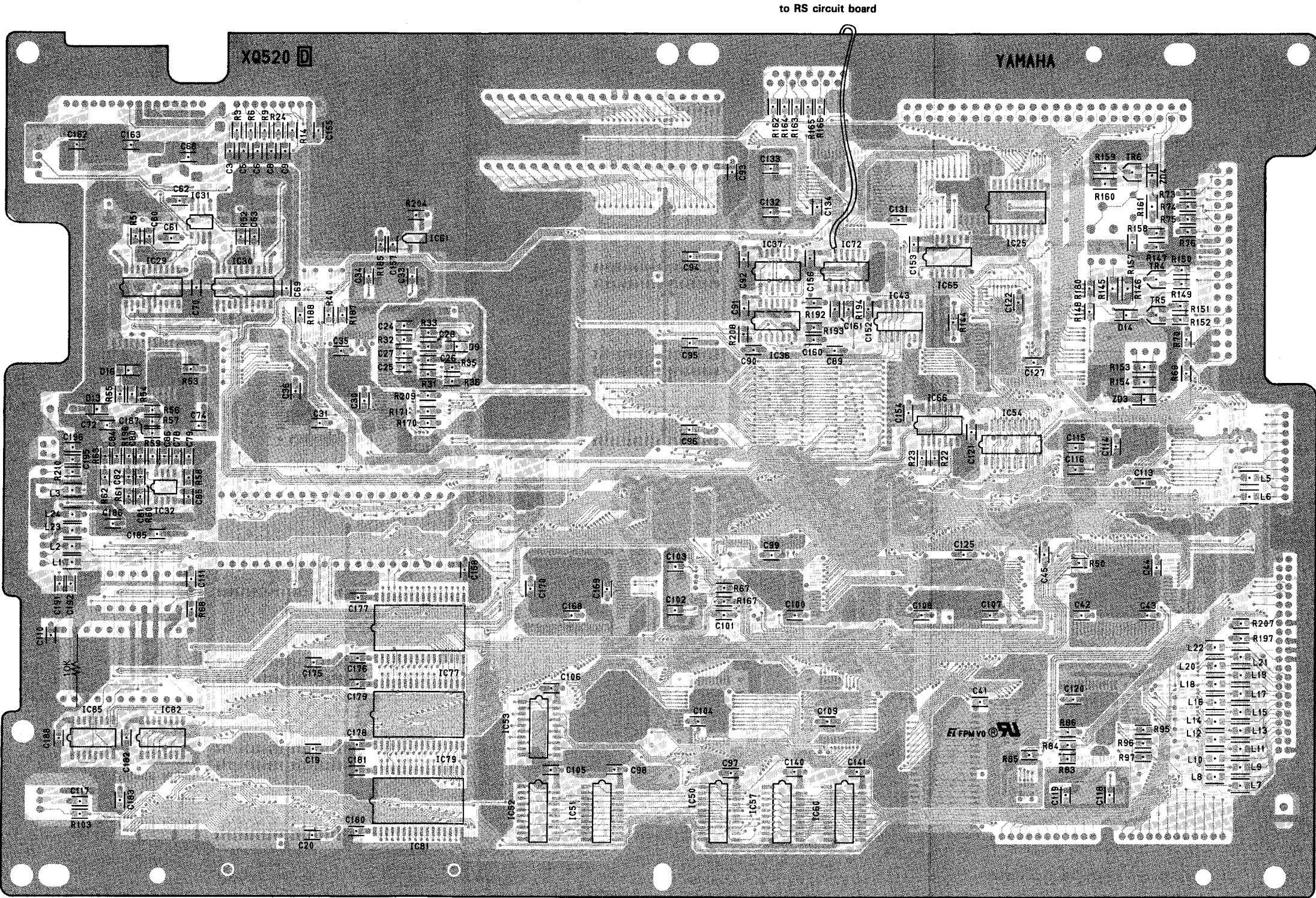


●DM Circuit Board(Pattern side)

- R 0035: 560.0K 0.1 J (RD258560)
R 0036,0144: 1.0M 0.1 J (RD259100)
R 0050: 150.0 0.1 J (RD255150)
R 0051,0052: 2.7K 0.1 J (RD256270)
R 0053,0058-0060, 0068,0148,0185, 0204: 10.0K 0.1 J (RD257100)
R 0056,0057,0069, 0083,0086,0147, 0149,0150-0152, 0167,0170,0171, 0188,0192,0197, 0207-0209: 22.0K 0.1 J (RD257220)
R 0061,0063: 100.0K 0.1 J (RD258100)
R 0062,0070,0073- 0076,0103: 1.0K 0.1 J (RD256100)
R 0145,0146: 470.0 1/4 J (RD155470)
R 0153,0154: 4.7K 1/4 J (RD156470)
R 0157,0180,0194: 5.6K 0.1 J (RD256560)
R 0158: 3.3K 0.1 J (RD256330)
R 0159,0160: 1.2K 1/4 J (RD156120)
R 0161: 150.0 1/4 J (RD155150)
R 0187: 680.0 0.1 J (RD255680)
R 0193: 390.0 0.1 J (RD255390)
R 0196: 2.2K 0.1 J (RD256220)
11. Resistor Array
RA 001-004,020- 025: EXB-V8V223JV (VM506200)
RA 005,006,015- 017: EXB-V8V473JV (VM811600)
RA 007-014,018, 019: EXB-V8V101JV (VQ018400)
12. Chip Inductance
L 0001-0003,0005- 0024: 56U LEM2520 T 56 (VR243700)
13. LC Filter
EMI: LS MT Y223NB (FZ006970)
14. Quartz Crystal Unit
CR 001: 16M SMD-49 (VP864900)
CR 002: 11.2896M SMD-49 (VP864800)
CR 003: 20.0M SMD-49 (VQ274700)
CR 004: 10M SMD-49 (VR870700)
15. Ceramic Resonator
CL 001: 16M CSACS16.00MX (VQ274900)
CL 002: 4M CSTCS4.00MG0C (VQ275000)
16. Connector Header
CN 007: HIF3FC-34PA2.54D (VH343800) to FDD
CN 009: HIF3FC-50PA2.54D (VL53660) to PN2-CN1
17. FPC Connector
CN 010: 5597-14CPB (VT89770) to LCD
18. Pin Header
CN 013: A3E-4P TE (VT32150) (to HDD)
19. Base Post Connector
CN 001: PH-16P TE (VF283400) to AM-CN4
CN 002: PH- 6P TE (VB390200) to VR-CN4
CN 003: PH- 4P TE (VB390000) to Wheels
CN 004: 53014- 3P TE (VE387000) to keyboard-CN1
CN 005: 53014-11P TE (VE387800) to keyboard-CN2
CN 006: 53014-12P TE (VE387900) to keyboard-CN3
CN 008: PH-11P TE (VB390700) to ES1-CN1
CN 011: PH-10P TE (VB390600) to JACK-CN1
CN 012: XH- 2P TE (LB918020) to AM-CN2
CN 014: PH- 5P TE (VB39010) to AM-CN4
20. Sub-circuit Board
SR 1: (VT93990-A) S/# 1001-S/#1098
SR 2: (VT93990-C) S/#1099-S/#5400
RS: (VU14320)



Pattern side